

S O U R C E
2 0 1 1 B C E

MAYER FABRICS SIMPATICO COLLECTION

SOURCE INTERNATIONAL



MOSAIC
349-007 Natural



VALOR
340-007 Alabaster



GENESIS
354-002 Wheat



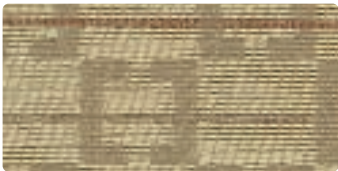
SOJOURN
338-007 Alabaster



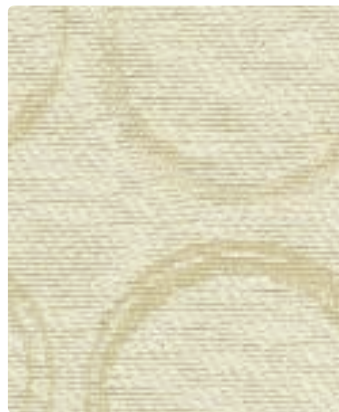
GENESIS
354-007 Quartz



SOURCE
353-002 Jonquil



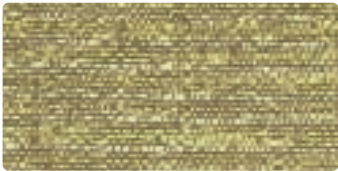
AMULET
336-007 Sandstone



SOURCE
353-007 Alabaster



DESTINY
360-007 Beachcomber



GENESIS
354-013 Pear



SOURCE
353-007 Alabaster



MOSAIC
349-013 Spring



SOURCE
353-003 Fern



DESTINY
360-013 Celadon



AMULET
336-003 Limelight



VALOR
340-003 Green Tea



GUARDIAN
GU-002 Chamois



GUARDIAN
GU-007 Doeskin



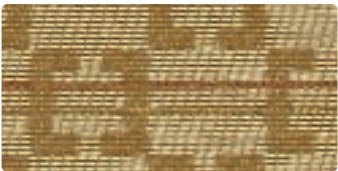
GUARDIAN
GU-023 Green Tea



GUARDIAN
GU-003 Jade



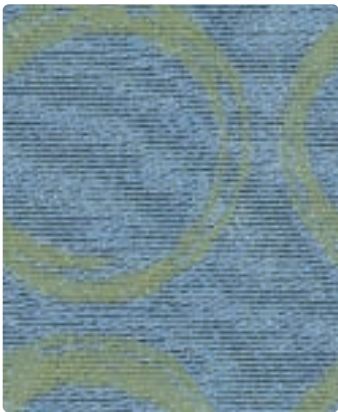
VALOR
340-002 Chamois



AMULET
336-002 Chamois



DESTINY
360-024 Azure



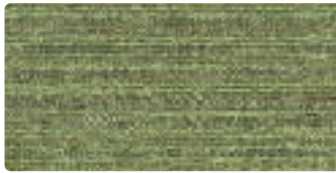
SOURCE
353-004 Oasis



MOSAIC
349-004 Cerulean



GUARDIAN
GU-044 Turquoise



GENESIS
354-003 Jade



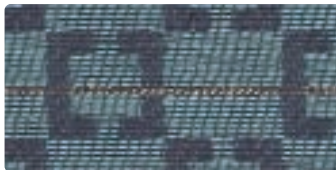
SOJOURN
338-014 Mist



MOSAIC
349-014 Dusk



VALOR
340-014 Mist



AMULET
336-014 Just Blue



GUARDIAN
GU-034 Spa



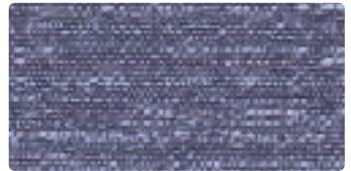
MOSAIC
349-003 Laurel



DESTINY
360-014 Capri



SOURCE
353-014 Aqua



GENESIS
354-014 Atlantic



SOJOURN
338-004 Just Blue



GUARDIAN
GU-024 Cyan



GUARDIAN
GU-014 Regatta



MOSAIC
349-002 Caramel



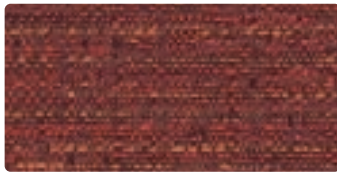
SOURCE
353-009 Tabasco



GENESIS
354-009 Topaz



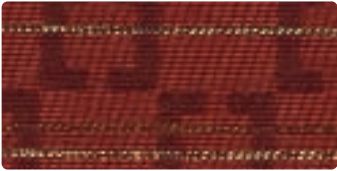
VALOR
340-019 Mango



GENESIS
354-001 Firestorm



VALOR
340-009 Persimmon



AMULET
336-009 Persimmon



SOJOURN
338-009 Poppy



DESTINY
360-001 Fiesta



SOURCE
353-008 Plum



DESTINY
360-005 Wildberry



SOJOURN
338-005 Cloak



MOSAIC
349-005 Berry



GENESIS
354-008 Confetti



AMULET
336-005 Cloak



GUARDIAN
GU-009 Terra Cotta



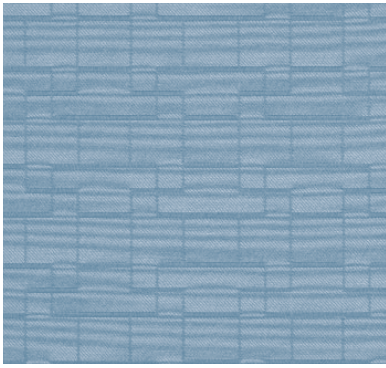
GUARDIAN
GU-011 Paprika



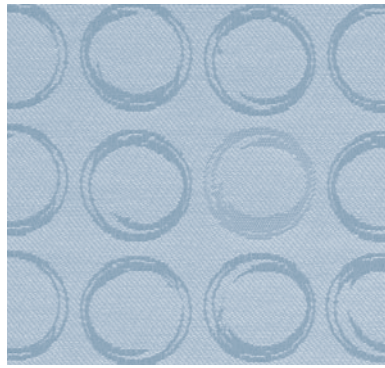
GUARDIAN
GU-008 Port



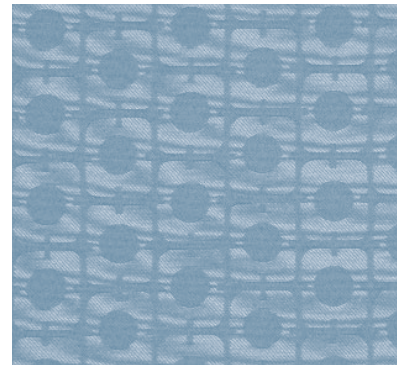
GUARDIAN
GU-005 Purple



SOJOURN - Repeat: 4.5" H, 4.25" V



SOURCE - Repeat: 7.25" H, 7.25" V



VALOR - Repeat: 2.75" H, 3.337" V

ADDITIONAL COLORS AVAILABLE

AMULET

336-001 Merlot
336-004 Indigo

DESTINY

360-003 Meadow
360-004 Sapphire
360-006 Granite
360-009 Pumpkin
360-019 Bronze

GENESIS

354-000 Truffle
354-004 Twilight
354-006 Lava
354-016 Greystone

GUARDIAN

GU-000 Umber
GU-001 Scarlet
GU-004 Indigo
GU-006 Ebony
GU-010 Greige
GU-013 Willow
GU-016 Charcoal
GU-017 Parchment
GU-021 Poppy
GU-026 Shadow
GU-033 Citron
GU-043 Pampas
GU-053 Bronze

MOSAIC

348-000 Espresso
348-001 Blaze
348-009 Mango

SOJOURN

338-003 Green Tea
338-006 Midnight
338-019 Mango

SOURCE

353-005 Magenta
353-006 Ebony

VALOR

340-004 Indigo
340-006 Midnight

PATTERNS AVAILABLE IN STOCK WITH DURABLOCK™

(to order, please use the below numbers) – *color shown on card

AMULET

DB400-001 Merlot
DB400-002 Chamois*
DB400-003 Limelight*
DB400-004 Indigo
DB400-005 Cloak*
DB400-007 Sandstone*
DB400-009 Persimmon*
DB400-014 Just Blue*

DESTINY

DB405-001 Fiesta*
DB405-003 Meadow
DB405-004 Sapphire
DB405-005 Wildberry*
DB405-006 Granite
DB405-007 Beachcomber*
DB405-009 Pumpkin
DB405-013 Celadon*
DB405-014 Capri*
DB405-019 Bronze
DB405-024 Azure*

GENESIS

DB408-000 Truffle
DB408-001 Firestorm*
DB408-002 Wheat*
DB408-003 Jade*
DB408-004 Twilight
DB408-006 Lava
DB408-007 Quartz*
DB408-008 Confetti*
DB408-009 Topaz*
DB408-013 Pear*
DB408-014 Atlantic*
DB408-016 Greystone

MOSAIC

DB406-000 Espresso
DB406-001 Blaze
DB406-002 Caramel*
DB406-003 Laurel*
DB406-004 Cerulean*
DB406-005 Berry*
DB406-007 Natural*
DB406-009 Mango
DB406-013 Spring*
DB406-014 Dusk*

SOJOURN

DB402-003 Green Tea
DB402-004 Just Blue*
DB402-005 Cloak*
DB402-006 Midnight
DB402-007 Alabaster*
DB402-009 Poppy*
DB402-014 Mist*
DB402-019 Mango

SOURCE

DB407-002 Jonquil*
DB407-003 Fern*
DB407-004 Oasis*
DB407-005 Magenta
DB407-006 Ebony
DB407-007 Alabaster*
DB407-008 Plum*
DB407-009 Tabasco*
DB407-014 Aqua*

VALOR

DB404-002 Chamois*
DB404-003 Green Tea*
DB404-004 Indigo
DB404-006 Midnight
DB404-007 Alabaster*
DB404-009 Persimmon*
DB404-014 Mist*
DB404-019 Mango*

GUARDIAN SPECIFIC TREATMENTS

Enhanced Bleach Resistance Mildew, Bacteria and Staph Resistant (Protected by Nanocide® Antimicrobial) Sulfide Stain Resistant Urine Stain Resistant

GUARDIAN BACTERIAL RESISTANCE

Face protected with Nanocide® antimicrobial agent Passes AATCC Test Method 147-1988 Back protected to conform with ASTM G21

Guardian utilizes Nanocide® technology, a patent-pending process which permanently embeds silver particles from an EPA registered Oeko-Tex approved source into the face of the product during the manufacturing process. Silver is a natural antimicrobial. Microbes and fungi cannot survive in the presence of silver ions. The smaller the silver particles, the more silver ions they emit and the more unwanted microbes are eliminated. Silver enhanced antimicrobial products actively inhibit bacterial growth and show a 99.9% reduction in test microbes and bacteria.*

When the recommended cleaning and care instructions are properly followed, Nanocide® and its nanoparticles are not washed or worn off. The killing effectiveness does not get diluted or neutralized. It keeps working as it was designed to work for the life of the product. The silver ions that these particles release during normal use are quickly deactivated in wastewater by common substances like chlorine and sulfide to form inert materials.

Nanocide® suppresses the growth and proliferation of algae, mold, mildew, fungi, and bacteria which cause unpleasant odors, discoloration, staining, and deterioration.

*Efficacy data is presented solely to substantiate the antimicrobial activity of silver additives and do not imply a public health claim.

CLEANING INFORMATION

S: Solvent – Spot clean fabrics, using a mild water-free solvent or dry cleaning product. Clean only in a well-ventilated room and avoid any product containing carbon tetrachloride or other toxic materials. Pretest a small area before proceeding.

GUARDIAN CLEANING INFORMATION

W: Water-Based Cleaner – Spot clean vinyl, using the foam only from a water-based cleaning agent, such as a mild detergent or non-solvent upholstery shampoo product. Apply foam with a soft brush in a circular motion. Vacuum when dry. Pretest small area before proceeding.

In general, most household soil can be easily removed from vinyl with warm soapy water and several clear water rinses. Moderate scrubbing with a medium bristle brush will help to loosen the soiling agent from the impressions of the surface. For more specific vinyl staining, refer to the following guide.

Soil, Eye Shadow, Crayon, Chocolate, Suntan Lotion: Warm soapy water and rinse. Use nonabrasive household cleaners or mild household cleaner such as 409®. Rinse with clear water and dry.




Ball Point Ink: Immediately wipe with 70% rubbing alcohol. Rinse and dry with clean cloth. Rinse with clear water and dry.

Tar/Asphalt, Shoe Polish, Grease: Remove immediately. Dampen cloth with mineral spirits, rub gently from outside edge of stain to center. Rinse with mild soap and water. Rinse with clear water and dry.

Surface Mildew: Use nonabrasive household cleaners or mild household cleaners such as 409®. Rinse with clear water and dry. If mildew stain persists, clean with 5:1 bleach and water. Rinse with clear water and dry.

TECHNICAL INFORMATION

Simpatico Coordinates

Pattern 54"	Content and Backing	Weight/ Linear Yd	Pattern Repeat	Finish	Abrasion  * Wyzenbeek	Light  * Fastness	Flammability  *	Cleaning Code	Grades NT/NT+DB*
AMULET <i>Directional</i>	58% Cotton, 42% Polyester Latex Backing (also available with DuraBlock™ barrier)	13.04 oz.	1.125" H 1.125" V	Nano-Tex®	30,000 Double Rubs	60 hours	Cal. 117-E (Equiv. to BIFMA) NFPA 260 (Equiv. to UFAC)	S	80/A
DESTINY <i>Directional Shown Railroaded</i>	54% Cotton, 46% Polyester Latex Backing (also available with DuraBlock™ barrier)	13.34 oz.	2.25" H 0" V	Nano-Tex®	50,000 Double Rubs	40 hours	Cal. 117-E (Equiv. to BIFMA) NFPA 260 (Equiv. to UFAC)	S	80/A
GENESIS <i>Directional</i>	54% Cotton, 46% Polyester Latex Backing (also available with DuraBlock™ barrier)	11.964 oz.	Non- Matching	Nano-Tex®	100,000 Double Rubs	40 hours	Cal. 117-E (Equiv. to BIFMA) NFPA 260 (Equiv. to UFAC)	S	80/A
GUARDIAN <i>Directional</i>	100% Vinyl 100% Knitted Polyester	25 oz.	Non- Matching	Blockade®/ Nanoicide®	3,000,000 Double Rubs	1000 hours	Cal. 117-E (Equiv. to BIFMA) NFPA 260 (Equiv. to UFAC) FMVSS 302	W	A
MOSAIC <i>Directional</i>	57% Cotton, 43% Polyester Latex Backing (also available with DuraBlock™ barrier)	12.64 oz.	14.375" H 13.25" V Random Match	Nano-Tex®	100,000 Double Rubs	40 hours	Cal. 117-E (Equiv. to BIFMA) NFPA 260 (Equiv. to UFAC)	S	80/A
SOJOURN <i>Directional</i>	58% Cotton, 42% Polyester Latex Backing (also available with DuraBlock™ barrier)	13.04 oz.	4.5" H 4.25" V	Nano-Tex®	30,000 Double Rubs	60 hours	Cal. 117-E (Equiv. to BIFMA) NFPA 260 (Equiv. to UFAC)	S	80/A
SOURCE <i>Directional</i>	58% Cotton, 42% Polyester Latex Backing (also available with DuraBlock™ barrier)	13.4 oz.	7.25" H 7.25" V	Nano-Tex®	45,000 Double Rubs	40 hours	Cal. 117-E (Equiv. to BIFMA) NFPA 260 (Equiv. to UFAC)	S	80/A
VALOR <i>Directional</i>	58% Cotton, 42% Polyester Latex Backing (also available with DuraBlock™ barrier)	13.04 oz.	2.75" H 3.337" V	Nano-Tex®	30,000 Double Rubs	60 hours	Cal. 117-E (Equiv. to BIFMA) NFPA 260 (Equiv. to UFAC)	S	80/A

*NT/NT+DB = Nano-Tex finish only / Nano-Tex plus DuraBlock™ barrier

All patterns may comply with California Technical Bulletin 133 when combined with appropriate components.

FEATURES AND BENEFITS OF NANO-TEX®

Spill/Stain Prevention

- Fabric aggressively repels liquids (liquid beads and rolls off)
- Liquids can be blotted off the fabric face preventing staining and penetration
- Helps prevent staining of fabric from dirt and spills, including hot coffee, mustard, salad dressing, blood, urine, and iodine
- Can be cleaned with detergents, solvents, or bleach (fabric appropriate)

Performance

- Maintains natural hand
- Highly breathable
- Permanent

Environmentally Friendly

- Nano-Tex® is an environmentally friendly chemistry that is recyclable
- MBDC Certified

DURABLOCK™ INFORMATION

All patterns on this card are stocked with DuraBlock™ and can be ordered from inventory by the yard. Please use the DuraBlock™ number found on the cleaning information and grayscale page in the orange color.

Same "Features and Benefits" of Nano-Tex® plus the following:

Durable, Breathable Barrier

- Prevents liquid or contaminate from reaching cushion
- Breathability offers comfort for extended seating periods compared to vinyls and polyurethanes
- Leaves fabric soft and moldable for upholstery applications

Environmentally Friendly

- 100% antimony-free polyester is completely recyclable
- Conforms to MBDC's design protocol

ADDITIONAL INFORMATION

Additional colors are available. Please contact Mayer Fabrics for more information.

Custom Capabilities: All patterns can be custom colored. Minimum yardage applies.

Memo Samples: Please keep this card intact. Memo samples can be ordered on our web site or by contacting customer service.

Color Matching: Mayer Fabrics always attempts to ship a satisfactory commercial match. Because of industry standard dye lot variation, colors may not match exactly.

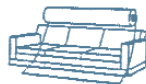
Specifications: Specifications are correct at the time of printing. Current specifications are available on our website.

For information or assistance with products or services, call us at 800.428.4415 or refer to our web site, www.mayerfabrics.com.

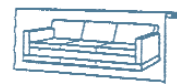
* ACT® Registered Certification Marks



Railroaded: This feature allows reduction of seams and enables smoother furniture tailoring.



Fabric "up the roll"
or "regular" position



Fabric "railroaded" or
"top selvage" position

All railroaded patterns should be upholstered as shown on card.

SOURCE



545 Hartford Turnpike
Shrewsbury, MA 01545
Phone: 800.722.0474 Fax: 508.842.1838
www.sourceseating.com

† 317.267.2626 or 800.428.4415 ‡ 317.267.2629 or 877.7SAMPLE
www.mayerfabrics.com
©2010 Mayer-Paetz, Inc.