

Grade 60

bryant park



6555
pumice



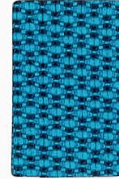
6556
curry



6559
hemlock



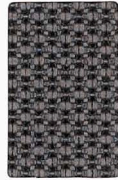
6561
crocodile



6553
nile



6552
medoc



6560
gunmetal



6564
chocolate



6558
saxon blue



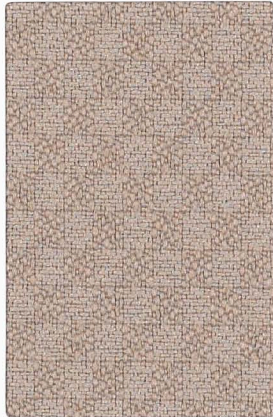
6563
night shadow



6550
burgundy

Grade 80

transcend



6079
natural



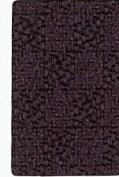
6078
ochre



6082
leaf



6073
azure



6076
eggplant



6077
port



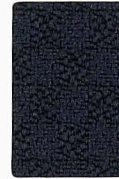
6071
mushroom



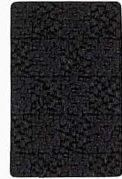
6081
forest



6072
periwinkle



6074
midnight



6070
ebony

Grade 80

new hempstead



nh420
jodhpurs



nh415
golden



nh421
cactus



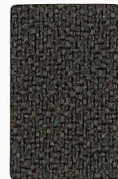
nh509
galaxy



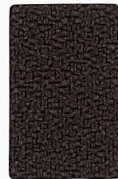
nh389
red wine



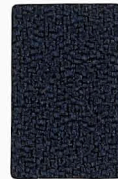
nh406
fire



nh425
zen



nh424
cocoa



nh369
navy



nh419
aubergine



nh333
black

specifications and technical information

pattern	content	abrasion resistance (wyzenbeek)	lightfastness (aatcc-16a)	break strength (astm d-5034)	flammability*	cleaning code
bryant park	100% polyester	exceeds 100,000 double rubs (heavy duty)	40 hours class 4	warp: 305 lbs. min. fill: 291 lbs. min.	calif. tech. bulletin 117, sec. e ufac class 1	w
new hempstead	100% polyester	exceeds 600,000 double rubs (heavy duty)	60 hours class 4	warp: 341 lbs. min. fill: 323 lbs. min.	calif. tech. bulletin 117, sec. e ufac class 1	w-s
transcend	100% polyester	exceeds 210,000 double rubs (heavy duty)	60 hours class 4.5	warp: 100 lbs. min. fill: 100 lbs. min.	calif. tech. bulletin 117, sec. e ufac class 1	w-s

all patterns are 54" wide and are protected by a soil and stain resistant finish.

recommended cleaning instructions:

w to prevent overall soil, frequent vacuuming or light brushing to remove dust and dirt is recommended. use only water-based cleaning agents such as a mild detergent or commercial upholstery shampoo. do not use solvents for cleaning. do not over saturate with water. cleaning by a professional furniture cleaning service is recommended.

w-s to prevent overall soil, frequent vacuuming or light brushing to remove dust and dirt is recommended. water-based cleaning agents and foam may be used for cleaning. this fabric may also be cleaned with mild, water-free solvents. cleaning by a professional furniture cleaning service is recommended.

dye lots may vary slightly from samples shown.

*this term and any corresponding data refer to typical performance in the tests indicated and should not be construed to imply the behavior of this or any other material under actual fire conditions.

S O U R C E

p. 800.722.0474
f. 508.842.1838
cr@sourceseating.com

cfstinson

C.F. Stinson, Inc.
2849 Product Drive
Rochester Hills, MI 48309
p 248.299.3800
p 800.841.6279
f 248.299.3884
cfstinson.com